

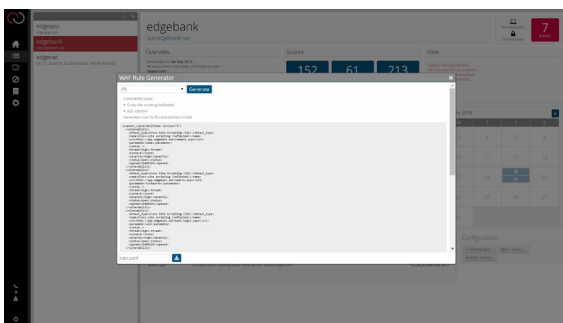
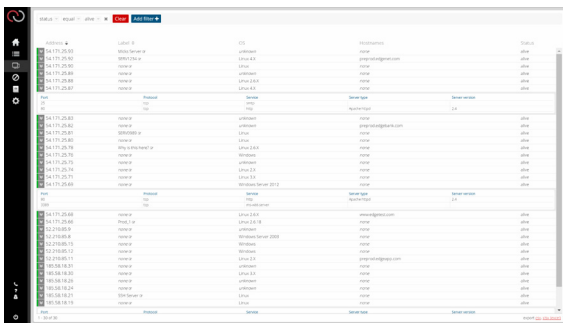
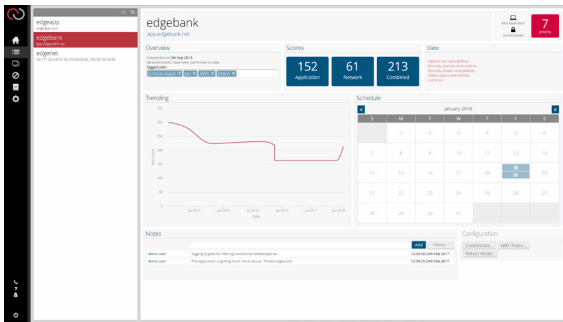
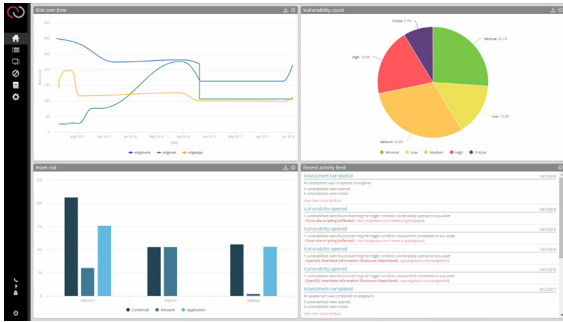
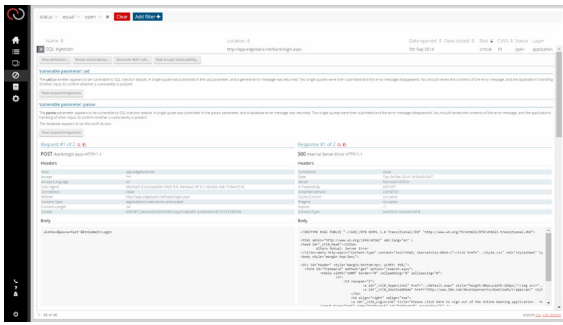


# EFFECTIVE, SCALABLE, #FULLSTACK VULNERABILITY MANAGEMENT



**bsi.**

# Edgescan Portal



# ABOUT EDGECAN

**SaaS:** Edgescan is a 'Security-as-a-Service (SaaS)' vulnerability management service which detects vulnerabilities in both web application and hosting infrastructure alike.

**Hybrid Scalable Assessments:** Edgescan detects both known (CVE) vulnerabilities and also web application vulnerabilities unique to the application being assessed due to our hybrid approach.

**Analytics & Depth:** Coupling leading edge risk analytics, production-safe automation and human intelligence, Edgescan provides deep authenticated and unauthenticated vulnerability assessment across all layers of a systems technical stack. Historical data to measure your risk profile over time. Effortless visibility into your fullstack security posture at-a-glance - Vulnerability Intelligence.

**Coverage:** Edgescan provides "fullstack vulnerability management" covering both hosting environments, component & frameworks and developer-written code. Our **edgescan advanced™** license even covers business logic and advanced manual testing techniques.

**API Discovery & Assessment:** Edgescan's API Scanner is able to detect vulnerabilities in any API, such as mobile back-end servers, IoT devices, and any RESTful APIs. Consume API descriptor files (Swagger, JSON, WSDL, YAML) and automatically test documented methods. Deliver API discovery profiling to help you maintain an asset register of APIs live on your estate. Discover APIs across your IP/CIDR ranges using our multi-layer API discovery technology - Find rogue or unknown APIs across your estate and alert you to new discoveries.

**Support:** Dedicated expert support from seasoned penetration testers and developers, to provide advice and remediation guidance.

**Intelligent Validation:** All vulnerabilities discovered by Edgescan are verified by our technology coupled with expert human analysis. This ensures accuracy. We eliminate false positives and streamline the remediation process, saving valuable developer time and resources.

**Rich API Integration:** Our API makes it simple to plug Edgescan into your ecosystem in order to correlate and reconcile, providing integration with both GRC and Bug Tracking and DevSecOps Systems alike.

**Alerting:** Customise Alerting via email, SMS, Webhooks, Slack, API etc, based on custom criteria.

**Continuous Asset Profiling:** Continuous profiling of the entire Internet-facing estate detecting changes in estate profile and eliminating blind spots.

**Scale:** Managing estates from one web application to thousands, from a single hosting environment to global cloud infrastructure, Edgescan delivers continuous vulnerability intelligence, support and testing-on-demand.

**Compliance:** Edgescan is a certified PCI ASV, ISO 27001 & CREST certified and delivers testing covering the OWASP Top 10, WASC threat classification, CWE/SANS Top 25, etc.

**On-demand:** Via the portal or API, request retests, ad-hoc scans as much as you need at no extra cost. All with the added comfort of validated findings and expert support.



## WHAT IS EDGESCAN?

Edgescan is a vulnerability management service (SaaS) which continuously identifies cyber security vulnerabilities across the #fullstack, provides continuous system visibility and provides support to understand, prioritise and mitigate cyber security risks on a continuous basis.

### How Edgescan works

Our expert security analysts on-board, enumerate and prioritise your assets (e.g. websites, mobile applications, web applications, cloud applications, endpoints & hosting servers) into **Edgescan**.

We perform continuous vulnerability assessments of all assets, as much or as little as you require.

**Edgescan** assessments cover both technical and logical testing, including all OWASP vulnerabilities, WASC threat classification and CWE known vulnerabilities. **Edgescan** also aligns and surpasses PCI (Payment Card Industry) compliance requirements. In fact, **Edgescan** is a certified PCI Approved Scanning Vendor (PCI ASV).

**False Positive Free:** Manual verification by our expert security analysts ensures that all application and network vulnerabilities found are verified as real and ranked by security risk. This procedure allows for false positive free vulnerability intelligence for all assets.

The **Edgescan** online portal provides 24/7 visibility of security metrics, trending data, key performance indicators (KPIs) and enables users to generate custom reports to manage and remediate cybersecurity risk. Our fully extensible API provides users with the ability to integrate **Edgescan** vulnerability intelligence into any GRC or bug tracking system.

Ultimately, **Edgescan** users benefit from continuous vulnerability management and penetration testing, security visibility and security intelligence.

**Edgescan** is unique, being the only hybrid full-stack security solution of its kind in Europe, Middle East and Africa (EMEA). This involves unlimited security assessments of both networks and applications coupled with manual verification of findings by **Edgescan** security analysts.

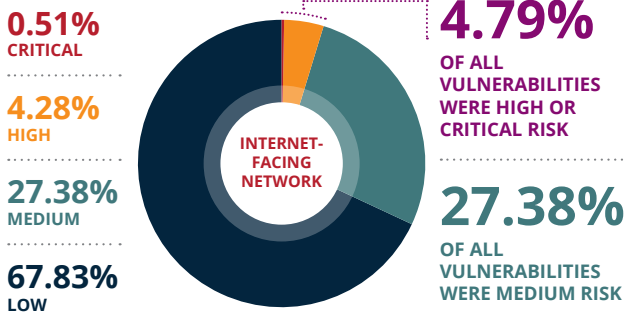


# RISK DENSITY

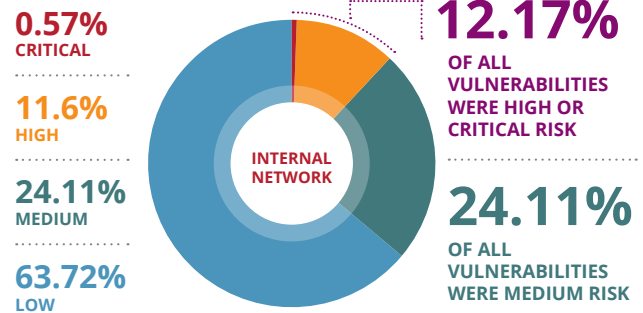
## RATE OF OCCURRENCE OF VULNERABILITIES AS A PERCENTAGE OF ALL VULNERABILITIES DISCOVERED

Externally facing web applications still have a significantly higher Risk Density, with 34.78% of vulnerabilities discovered rated as High or Critical Risk, compared to externally facing network layer systems, with a High or Critical risk density of just 4.79%.

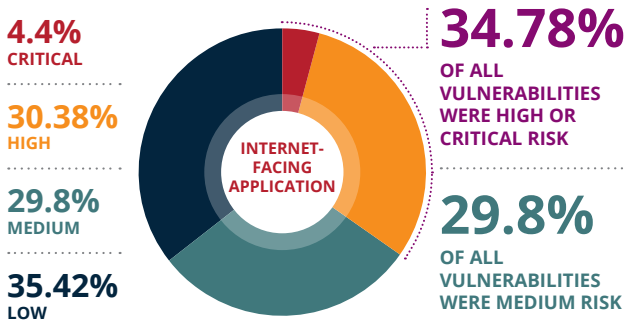
### INTERNET-FACING NETWORK



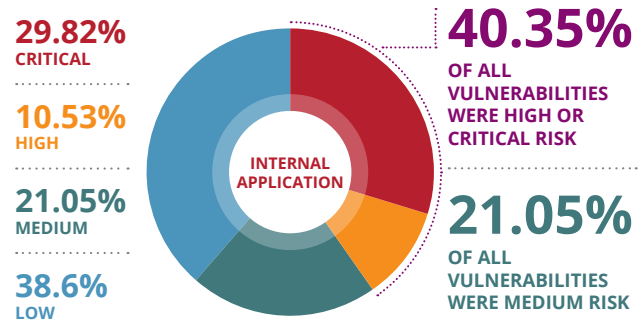
### INTERNAL NETWORK



### INTERNET-FACING APPLICATION



### INTERNAL APPLICATION



Did you know? We are proud contributors of statistical data for the Verizon Data Breach Investigations Report (DBIR)

## THOUSANDS OF VULNERABILITIES: ONE MANAGEMENT SOLUTION

---



### Accuracy

**Edgescan** security analysts are experts in vulnerability management and penetration testing. They manually verify all discovered security vulnerabilities, so our clients benefit from accurate (false positive free) vulnerability intelligence.



### Cost Benefits

**Edgescan** is a managed security service provider (MSSP) that can save your business significant costs. With **Edgescan**, there is no need for hiring and training additional security staff, and no need to purchase further hardware or software licenses.



### Continuity

**Edgescan** provides continuous or on-demand security assessments in a production safe manner so you can be assured your business is getting the coverage as required.

---

**Edgescan** vulnerability assessment and management consists of a sophisticated platform and multiple tuned web scanning engines. This is coupled with a powerful, easy-to-use, web-based vulnerability management and reporting platform and extensive integration capabilities through the **Edgescan** API.

**Edgescan** provides a flexible licensing scheme and allows unlimited assessments across the full technology stack. Clients that find **Edgescan** an invaluable service include financial, gaming and medical firms, including many leading brands globally.

## COMPLETE VULNERABILITY MANAGEMENT

---



### Progress Tracking

Tracking your vulnerability history so you can measure your security posture and improvement over time.



### Manual Validation

No time wasted on figuring out next steps, as all findings are verified to be real, accurate and risk rated by our security engineers.



### Awesome Reports

Deeply customisable reporting, from executive summary to deep technical data and remediation advice.



### Time Saving

The information you need to prioritise your security issues and help you focus your efforts - maximize your time.



### Flexibility

Did you change your codebase?  
Did you just spin up a new server?  
Assessments - scheduled when you want them.



### Expertise

Significant global experts have been the architects of our practices, approach and overall solution.



### Security Insights

Verification of security improvements and information on any new threats or emerging threats.



### Advanced API

Connect using the API and consume vulnerability intelligence from the **Edgescan** cloud into GRC, Bug Tracking, SIEM & MSSP systems. Our API provides you with the capability to invoke assessments, assign scan targets, download metrics, tag assets, generate custom reports and integrate to custom data analytics engines.



### Cost Savings

Save money and time by understanding what risks are faced by your systems and how to fix them.

# SIMPLIFYING SECURITY

---



## Industry Recognition:

**Edgescan** is a leading application security testing platform and leads the pack in Gartner “Peer Insights”.

**Edgescan** is a certified Amazon partner, certified Payment Card Industry Approved Scanning Vendor (PCI ASV) and a leader in global #fullstack vulnerability management.



## Edgescan CloudControl:

Using **Edgescan** CloudControl, internal non-Internet facing systems can be assessed on an on-demand or scheduled basis. CloudControl also provides the ability to integrate with DevSecOps environments for pre-production assessments.



## Edgescan and IoT:

**Edgescan** offers continuous visibility, service identification, port scanning and DNS querying for IoT systems, helping you get continuous security and visibility on-demand with a single dashboard for coordination and vulnerability intelligence.



## Edgescan WiFi SaaS:

Remote WiFi assessments can be delivered using the **Edgescan** “PicoBox”. Assess branch WiFi, Wireless PoS (Point of Sale), and corporate wireless network systems via the **Edgescan** cloud. Manage the security of hundreds of Wifi networks from a unified dashboard, to get ultimate visibility.



## WAF Integration:

Auto generation of Web Application Firewall (WAF) rules in one click. “Virtually patch” web application vulnerabilities, helping you mitigate risks faster. Support for F5, Citrix, Imperva, ModSecurity and many more.



## API Testing:

API ecosystems are no problem for **Edgescan**. We have pioneered a robust approach to API continuous security assessment, with the same depth and rigour as a traditional web application estate.



## Alerting and Events:

**Edgescan** can deliver alerts to you any way you require. Be it via the API, Webhooks, SMS, email or instant messaging (e.g. #slack), **Edgescan** can inform you of an event that is meaningful to you.



## Asset Tagging:

“Tag” assets with anything you want. Group and search assets by tags. An easy way to manage multiple assets with similar attributes across an enterprise estate.

# LEADING #FULLSTACK VULNERABILITY MANAGEMENT

---



## Continuous Asset Profiling:

**Edgescan** Continuous Asset Profiling is a feature for all **Edgescan** licenses. It delivers continuous endpoint discovery and asynchronous port scanning to help you identify and monitor assets and network changes as they occur.

Continuous Asset Profiling supports service, DNS and OS detection and can generate alerts based on what you need to know using the events API or portal.



## PCI Compliance:

**Edgescan** is a certified Payment Card Industry Approved Scanning Vendor (PCI ASV).

**Edgescan** exceeds requirements of the PCI DSS by providing continuous, verified vulnerability assessments for both internal, public Internet facing websites and cloud environments.

**Edgescan** Advanced includes business logic and penetration testing required by the PCI DSS standard.



## Host/Server Security Assessment:

Server Vulnerability Assessment covering over 90,000 CVEs. Designed to help ensure your deployment, be it in the cloud or on premise, is secure and configured securely.

All vulnerabilities are validated and risk rated by experts and available via the dashboard to track and report on when required.



## Web Application Security Assessment:

Validated web application security assessments on demand when you want them and scheduled as often as you need them.

Recording of risk ratings, trending data and other metrics on a continuous basis, all available via our rich dashboard for superior security intelligence.



## API Discovery

Find APIs exposed across your organisations global estate. Our **API Discovery** is part of the **Edgescan** continuous asset profiling SaaS that allows you to understand the API topology within an estate.

With **Edgescan** cataloguing and categorising correlation technology, it is possible to find the true inventory of APIs and exposures on the internet.

The proprietary discovery process runs at regular intervals across the entire estate, and reports/alerts the findings back to the end user.

# EDGESCAN APPROACHES / LICENSES

 <p>Foundational assessment for less critical applications</p> <p>Can be used across an enterprise to estimate basic security posture</p> <p>Massively scalable</p> <p>Validated results</p> <p>Very cost effective</p> <p><b>ESSENTIALS</b></p> <p>WEB APPLICATION DISCOVERY &amp; VULNERABILITY MANAGEMENT</p>	 <p>Includes all Edgescan Basic features but also includes authenticated testing to simulate a "logged in" attacker</p> <p>Recommended for use on permanent applications with authentication enabled</p> <p>Massively scalable</p> <p>Validated results</p> <p><b>STANDARD</b></p> <p>WEB APPLICATION VULNERABILITY MANAGEMENT</p>	 <p>Includes all the features of Edgescan Standard but also includes business logic testing on-demand to help detect complex security flaws</p> <p>Recommended for use on business critical and complex applications</p> <p>For applications with rigorous compliance requirements</p> <p><b>ADVANCED</b></p> <p>WEB APPLICATION PENETRATION TESTING VULNERABILITY MANAGEMENT</p>	 <p>For scanning hosts and servers located in data centres or cloud-based deployments</p> <p>Detects over 90,000 known vulnerabilities (CVE)</p> <p>Assessment across IP ranges or single IP's</p> <p>Massively scalable, extremely flexible and cost effective</p> <p>One license supports up to 256 hosts</p> <p><b>HOST/SERVER</b></p> <p>HOST/SERVER VULNERABILITY MANAGEMENT</p>
---	---	---	--

## Licenses Explained

	Edgescan™ essentials	Edgescan™ standard	Edgescan™ advanced	Edgescan™ host/server
Verified & Risk rated results	●	●	●	●
On-Demand testing	●	●	●	●
PCI Compliance	●	●	●	●
Highly Scalable	●	●	●	●
Support and access to analysts	●	●	●	●
Continuous Asset Profiling	●	●	●	●
API Access	●	●	●	●
Host/Server Vulnerability Analysis	●	●	●	●
Web Application Testing	●	●	●	
WAF/Firewall Rule Generation	●	●	●	
Authenticated Testing		●	●	●
Business Logic Testing			●	



# EDGESCAN EXAMPLE DEPLOYMENT

---

## Example Client Engagement Use Case 1

### Scope

---

- 1000 Hosts/Servers (IPs)
- 10 Web Applications:  
3 critical, 3 authenticated,  
4 basic (brochure)

### Suggested Approach

---

#### Initial Licenses Required:

- 6 Edgescan Standard + 4 Edgescan Essentials  
+ 4 Edgescan Host/Server

### Onboarding

---

- 1 week to on-board entire estate and commence continuous testing of all web applications and hosts.
- **Requirements:** URLs for applications, Server IPs & Login credentials where required.

3-6 months later, client may wish to upgrade from **Edgescan Standard** to **Edgescan Advanced** for 3 critical applications. This provides on-demand deep testing of the 3 critical applications in addition to the continuous testing via **Edgescan standard**.

## Example Client Engagement Use Case 2

### Scope

---

- 0 Hosts/Servers (IP's)
- 350 Web Applications

### Suggested Approach

---

#### Initial Licenses Required:

- 350 Edgescan Essentials

### Onboarding

---

- 1-2 weeks to on-board entire estate and commencement of continuous testing.
- Associated Servers/Hosts (up to 350 IPs) are also included for fullstack security coverage.
- **Requirements:** URLs for applications

After the initial onboarding the client may choose to upgrade the licenses from **Edgescan Essentials** to **Standard** or **Advanced** licenses for specific web applications.

An upgrade path is provided to easily upgrade required licenses to either **Standard** or **Advanced**. This provides additional on-demand deep testing of selected applications in addition to the continuous testing via **Edgescan Essentials**.

# RECOGNITION AND SUCCESS



With over 90,000 Assets under vulnerability management, Edgescan is listed in:

Gartner's  
Magic Quadrant  
for Managed  
Security Services

Gartner  
Application Security  
Hype Cycle

Gartner  
Software as a  
Service Hype Cycle

Gartner  
Cloud Security  
Hype Cycle

Edgescan is one of the highest rated security testing platform's in the Gartner Peer Review Portal

<https://www.gartner.com/reviews/market/application-security-testing/vendor/edgescan>

*"Easy to integrate on software applications. Useful for pen testing."*

**CTO IN THE RETAIL INDUSTRY**

*"We have been using this application for two years and we are delighted, it is very easy to integrate with our applications with the documentation it provides... Do not waste your time trying other solutions, you'll like it." – January 16, 2019*

Industry: Retail  
Firm Size: 500M – 1B USD

*"SecDevOps all love it, and so will you!"*

**INFORMATION SECURITY ASSISTANT  
IN THE FINANCE INDUSTRY**

*"Security love it for its ease of use, great reporting and reliability. Software Developer's love it because it is integrated easily, gives them peace of mind and is also easy to use and understand for them." – September 23, 2018*

Industry: Finance  
Firm Size: <50M USD

*"Three years with Edgescan and still impressed!"*

**HEAD OF SECURITY IN THE MANUFACTURING INDUSTRY**

*"Edgescan is responsive to feedback and eager to work with us to solve unique challenges. Scan output is very high quality and actionable. Compared to other scan software and services used over the past 20+ years Edgescan is by far a leader based on quality, price, and customer success." – December 5, 2018*

Industry: Manufacturing  
Firm Size: <50M USD

*"Validated vulnerability management software."*

**DIRECTOR OF IT IN THE FINANCE INDUSTRY**

*"The product itself is revolution to traditional vuln management, compare to automation tools in the market, it adds the extra value for manual validation, its very cost effective" – August 1, 2018*

Industry: Finance  
Firm Size: <50M USD

*"The Future of Vulnerability Management."*

**CHANNEL MANAGER IN THE MANUFACTURING INDUSTRY**

*"Great product & professional service, unique features unlike any other vuln management tool. Easy to set up, deploy and with 24/7 monitoring included this is a great product for any business but more specifically the mid-market." – October 3, 2018*

Industry: Manufacturing  
Firm Size: 500M – 1B USD

*"Excellent product that provides more bang-per-buck than other vendors."*

**HEAD OF IT SECURITY IN THE FINANCE INDUSTRY**

*"Edgescan provides us with independent third party assurance for our hosted solutions; interface is excellent and we have the ability to customise the scanning along with API reporting and manual testing – the business are extremely happy with the solution and the post-sales support for our secops team is second to none. In addition, the cost compared very favourably against other products out there."*

Industry: Finance  
Firm Size: 50M – 250M USD

# WHY EDGESCAN?

**Edgescan** is a managed security service which identifies and provides vulnerability intelligence on an on-going basis. It detects technical vulnerabilities in both internal and Internet facing systems and provides you with the power to understand, prioritise and fix.

It provides you the ability to manage both network and web application security issues for tens, hundreds or even thousands of your systems.

**Edgescan** conducts Application & Server vulnerability management with manual validation to help ensure your application / server security.

**Edgescan** reports are virtually False Positive free due to our hybrid approach of combining automated testing with manual validation.

**Edgescan** provides continuous asset profiling letting you see what systems and services are live and available at any point in time and provides alerting to let you detect rogue, APT or delinquent systems within your asset estate.

Edgescan gives you:		Manual threat verification and accuracy of all issues reported - false positive free
Unbeatable price-performance ratio		Prioritisation of security risks and remediation advice from our experts
Continuous Asset profiling and Alerting		24/7 dashboard access and customisable reporting
Continuous vulnerability assessment across both web and hosting layers		Integration via API to GRC/ Bug tracking/JIRA/Slack & Automatic WAF Rule integration

## False Positive Free, Full-Stack, Continuous Vulnerability Intelligence.

*"Very useful and helpful – helped us find a lot of issues quickly and very cost effective for the benefit delivered for us."*

CISO Financial Services, UK

*"Great customer focused service, and the clear explanation of the results from pen tests has certainly made our life easier."*

IT Architect, Legal Firm, UK&I

*"Excellent service, quick response, efficient and unobtrusive. Highly recommended."*

CISO Media Organisation, USA

*"Apart from a strong technical platform, the key advantage Edgescan seems to have over competitors is an ability to relate knowledge of the subject matter to real world actions..."*

Head of Application Security (Medical Organisation), Dublin, Ireland



*"...very successful service for us and has provided a focus to our teams to ensure we are constantly improving our security posture. Most importantly, being regular, it's no longer just a once a year focus."*

Gaming Client, EU





Find out more

IE/International

Call: +353 1 210 1711

Email: [cyber.ie@bsigroup.com](mailto:cyber.ie@bsigroup.com)

Visit: [bsigroup.com/cyber-ie](http://bsigroup.com/cyber-ie)



**FULLSTACK VULNERABILITY MANAGEMENT**

IRL: +353 (0) 1 6815330

UK: +44 (0) 203 769 0963

US: +1 646 630 8832

Sales and general enquiries:

[sales@edgescan.com](mailto:sales@edgescan.com)

@edgescan

[www.edgescan.com](http://www.edgescan.com)