

CSA SG Cyber Safe – Essentials Mark

Why should my organization apply?

Benefits of CSA Cyber Safe Cyber Essentials Mark

- Tailored to your enterprise's cybersecurity needs
- Simplifies cybersecurity by prioritizing the measures to focus on first
- Guides your enterprise to implement cyber hygiene measures against common cyber attacks
- Improves your ability to recover your operations
- Increase staff and stakeholder's confidence in the IT infrastructure
- Protect yours and customers business's information
- Minimise exposure to cyber threats
- Provides recognition of your cybersecurity practices by CSA

What is the Certification Duration valid for Cyber Essentials Mark?

The Cyber Essentials certification is valid for a duration of 2 years.

Is there any Grant available for Cyber Essentials Mark?

Yes, CSA Early Bird incentive*

To be deducted from the certification fees charged by certification bodies

Enterprises with: <10 employees: \$100

10 – 99 employees: \$200

100 – 200 employees: \$250

Inspiring trust for a more resilient world.

Frequently Asked Questions

* The following considerations apply to the early bird incentive:

- Applicable only from 29 Mar 2022 to 31 Mar 2023
- Applicable only for the first successful certification per enterprise
- Only Singapore-registered businesses and Non-Profit Organisations (NPO) incorporated in Singapore are eligible
- For the early bird incentive, enterprises shall submit their completed application forms to their selected certification bodies

CSA SG Cyber Safe Cyber Essentials mark – Pricing Table

First 20 clients are entitled for BSI Pilot Program Incentive! [Contact us](#) to find out more.

CSA Cyber Safe Cyber Essentials Mark – Pricing Table

| Profile of Enterprise | Certificate Application Fee | CSA Early Bird Incentive (First Successful Application) | Certification Fee Charged to Industry (Factoring in CSA Support) |
|----------------------------------|-----------------------------|---|--|
| Small SME (<10 employees) | S\$1,000 | S\$100 | S\$900 |
| Medium SME (10 – 99 employees) | S\$1,200 | S\$200 | S\$1,000 |
| Larger SME (100 – 200 employees) | S\$2,000 | S\$250 | S\$1,750 |

Please note:
The Certification Fee includes the following:

- Cyber Safe Cyber Essentials Mark Desktop verification by BSI
- **A one-time off complimentary retake (if applicable)**

*Price is exclusive of GST.

What is the Mode of Assessment for Cyber Essentials Mark?

The mode of assessment will involve desktop review and verification of the enterprise's self-assessment by an independent assessor.

What are the steps to obtaining CSA SG Cyber Safe Cyber Essentials mark certification?

CSA Cyber Safe Cyber Essentials Mark Process Overview (Manual Process)



Note 1: The self-assessment contains a set of questionnaires to fulfil the requirements set for Cyber Safe Cyber Essential mark. Organization shall complete this self-assessment form to document the qualitative description, cybersecurity controls and practices implemented within the organization.

Complimentary: Sales/Customer support is available if the applicant needs support before the start of the Cyber Essentials self-assessment manually or online

Software Platform coming soon!!!

The training course is available for CSA Cyber Essentials Mark to help you in understanding the Essentials Mark and fast-track your journey to obtain the Cyber Essentials Mark Certification:

CSA SG Cyber Safe Cyber Essentials Mark Training Outline – Bridging the gap to support SMEs



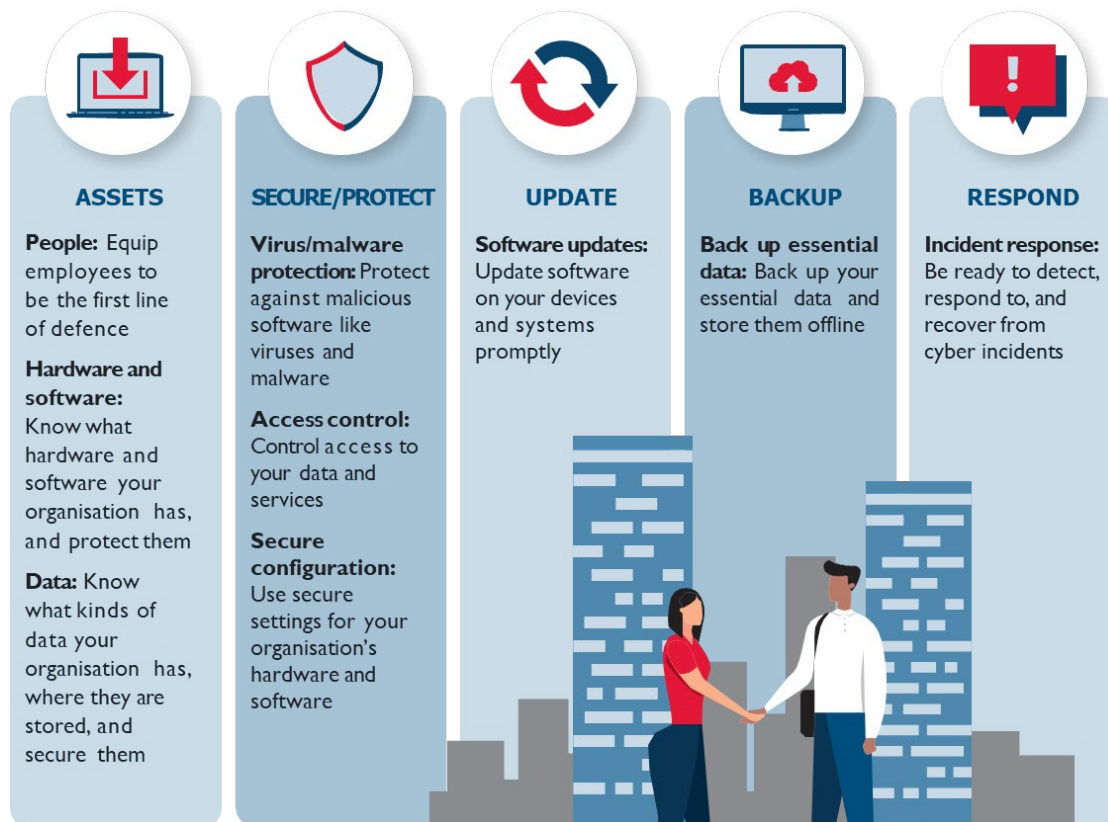
CYBER ESSENTIALS

| | | | |
|--|---|---|--|
| <p>Module 1</p> <p>Basic Overview of all modules Introduction to process What is expected Requirements 80/20 Pareto Scope for company Steering committee Cyber Essentials champion Readiness Check List</p> | <p>Module 2</p> <p>Cat 1- Assets</p> <ul style="list-style-type: none"> • People • H/ware & S/ware • Data <p>Training Materials</p> <ul style="list-style-type: none"> • Use description and suggested artefacts from CSA docs and give examples of what good looks like | <p>Module 3</p> <p>Cat 2- Secure/Protect</p> <ul style="list-style-type: none"> • Virus/ Malware Protection • Access Control • Secure configuration <p>Training Materials</p> <ul style="list-style-type: none"> • Use description, applicability from CSA Docs and list artefacts, give examples of what good looks like. | <p>Fast Track Module</p> <p>CE Mark Purpose CE Mark Process Outline Readiness Tool Walkthrough Assessment Walkthrough Certification Basics Of All Modules Cat 1- Assets Cat 2- Secure/Protect Cat 3- Update Cat 4- Back-Ups Cat 5- Respond Possible graduation to CS Trust Mark</p> <p>1st Session 5 May 2022 2pm – 5pm (SGT) Course Fee: \$198.00</p> <p>Early Bird Registration by 30 April 2022: \$150.00</p> |
| <p>Module 4</p> <p>Cat 3- Update</p> <ul style="list-style-type: none"> • S/ware Updates <p>Training Materials</p> <ul style="list-style-type: none"> • Use description, applicability from CSA Docs and list artefacts, give examples of what good looks like. | <p>Module 5</p> <p>Cat 4- Back-Ups</p> <ul style="list-style-type: none"> • Back up essential Data <p>Training Materials</p> <ul style="list-style-type: none"> • Use description, applicability from CSA Docs and list artefacts, give examples of what good looks like. | <p>Module 6</p> <p>Cat 5- Respond</p> <ul style="list-style-type: none"> • Incident Regime – detection, respond to and recover from cyber incidents <p>Training Materials</p> <ul style="list-style-type: none"> • Use description, applicability from CSA Docs and list artefacts, give examples of what good looks like. | |

Frequently Asked Questions

What are the parameters will be assessed for the CSA Cyber Essentials mark?

The CSA Cyber Essentials mark will be assessing the following 5 security measures:



(Infographics by CSA)

<https://www.csa.gov.sg/Programmes/sgcybersafe/cybersecurity-certification-for-enterprises/cyber-essentials-mark>

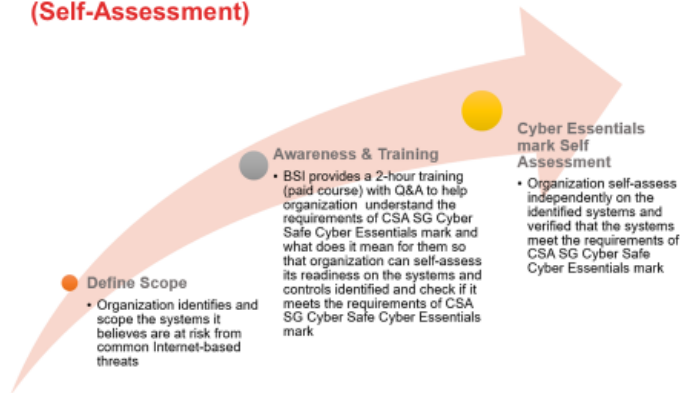
Why BSI for CSA Cyber Essentials Mark?

BSI USP on CSA SG Cyber Safe Cyber Essentials mark



CYBER
ESSENTIALS

CSA SG Cyber Safe Cyber Essentials mark Process (Self-Assessment)



- Readiness Self assessment (checklist) to aid the applicants for the actual assessment and awareness of their gaps to meet the requirements of Cyber Essential Mark.
- Modular Trainings are available to help organizations build their confidence before they apply for the Cyber Essential Mark. The training are tailored to the profile of the trainees.
- Ease of application via Online Software for faster turnaround time.
- Our verifiers are ISO 27001 qualified lead assessors with experience in Cybersecurity.
- BSI's experience as a CREST-accredited certifying body for the UK NCSC Cyber Essentials and Cyber Essentials Plus Certification.